



JINYIBO INSTRUMENT

Precise Instruments, Perfect Experience



P9800

Energy Dispersion X-Ray Fluorescence Analyzer



Direct quantification of rocks, ores

Fast positive analysis to quantify a wide variety of minerals



P9800

Energy Dispersive X-Ray Fluorescence Analyzer

P9800 Energy Dispersive X-ray Fluorescence Spectrometer is the most advanced all-element analytical instrument. The device with different measurement modes for light and heavy elements can accurately measure all the elements within F-U and finish measurement of more than 30 elements at the same time.

Application

The analysis of a wide range of mineral materials are covered with the P9800 such as :

- Steel Industry: Pig iron, slag, mineral, ore, sinter, agglomerate, pellets, iron powder, iron ore, etc.
- Refractory Material: mainly including high siliceous clay, high alumina bauxite, high magnesia, high chromia, corundum and other refractories.
- Ceramic Industry: raw material detection.
- Mining Industry: aluminum samples, lead-zinc ores(Pb-Zn mine), copper ores(Cu mine), tinstone (Sn mine), silver ores(Ag mine), molybdenum ores(Mo mine), etc.
- Geological Industry: geological prospecting, rock ore powder samples determination.

Your Material

Highly flexible analytical tools suitable for a wide range of elements

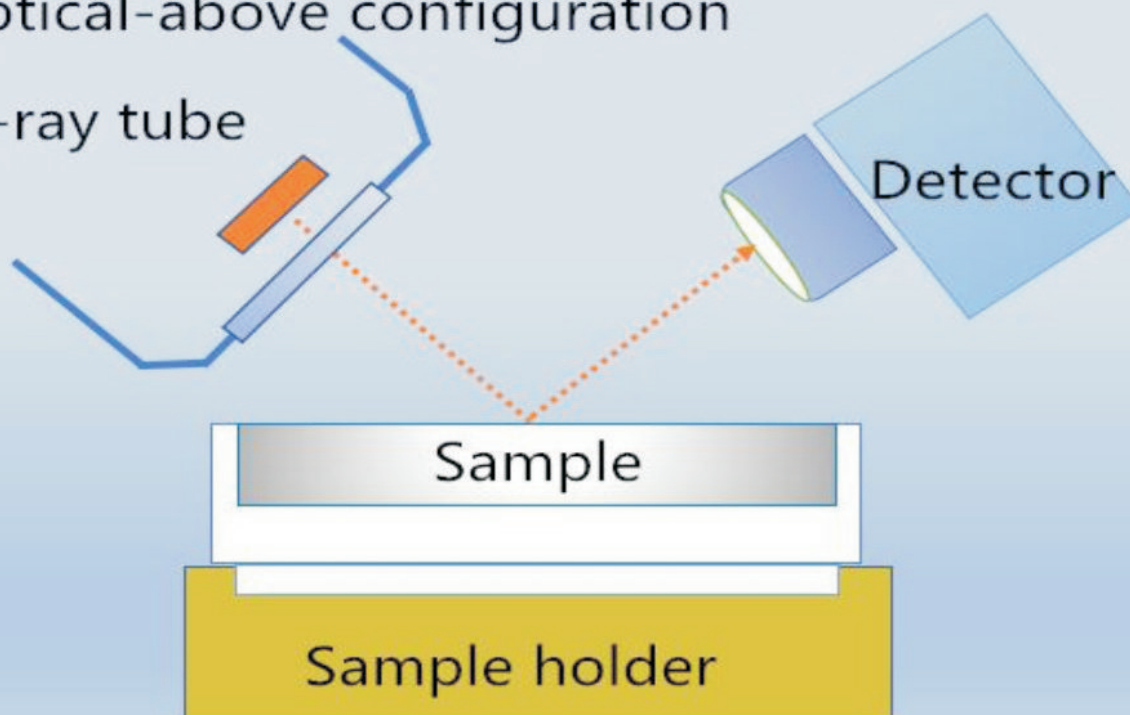
| | | | | | | | | | | | | | | | | | | |
|----|----|----------------------------------|----|----|----|----|----|----|----|----|----|----|----|----|----|----|----|----|
| H | | | | | | | | | | | | | | | | | He | |
| Li | Be | Z Possible to analyze with P9800 | | | | | | | | | | B | C | N | O | F | Ne | |
| Na | Mg | | | | | | | | | | | Al | Si | P | S | Cl | Ar | |
| K | Ca | Sc | Ti | V | Cr | Mn | Fe | Co | Ni | Cu | Zn | Ga | Ge | As | Se | Br | Kr | |
| Rb | Sr | Y | Zr | Nb | Mo | Tc | Ru | Rh | Pd | Ag | Cd | In | Sn | Sb | Te | I | Xe | |
| Cs | Ba | L | Hf | Ta | W | Re | Os | Ir | Pt | Au | Hg | Tl | Pb | Bi | Po | At | Rn | |
| Fr | Ra | A | | | | | | | | | | | | | | | | |
| | | | L | La | Ce | Pr | Nd | Pm | Sm | Eu | Gd | Tb | Dy | Ho | Er | Tm | Yb | Lu |
| | | | A | Ac | Th | Pa | U | Np | Pu | Am | Cm | Bk | Cf | Es | Fm | Md | No | Lr |

Advantage

| Model | P9800 | Competitors | Advantage |
|-------------------|--|---|---|
| Structure | Optics-above configuration | Optical-below configuration | Optics-above configuration is suitable for powder samples, especially the light elements Na, Mg, Al, Si, etc. This structure can prevent powder samples from dusting and collapsing the detector. Optics-below configuration is suitable for lump samples such as Alloy and RoHS analysis, but it is not suitable for powder samples analysis. |
| Resolution | 100ev | 145ev | 100ev is better than 145ev |
| Analysis accuracy | 0.023% | 0.05% | P9800 EDXRF is better |
| Vacuum | 10^{-2} pa in 10 seconds, It can guarantee no air leakage for 30 minutes | 50 pa, Simultaneous evacuation and analysis | P9800 EDXRF uses a vacuum system, which has the characteristics of high vacuum and stability, and it has absolute advantages for the analysis of light elements Na, Mg, Al, Si. |
| Detection limit | Na \leq 0.1%, Mg&Al \leq 0.01%, P, S, Cl, K, Ca, Ti, V, Cr, Mn, Fe \leq 0.001%. Cu, Pb,Zn, As \leq 0.0001%, etc. | Na \leq 1%, Mg&Al \leq 0.1% P, S, Cl, K, Ca, Ti, V, Cr, Mn, Fe \leq 0.001%. Cu, Pb, Zn, As \leq 0.0001%, etc. | P9800 EDXRF is better |

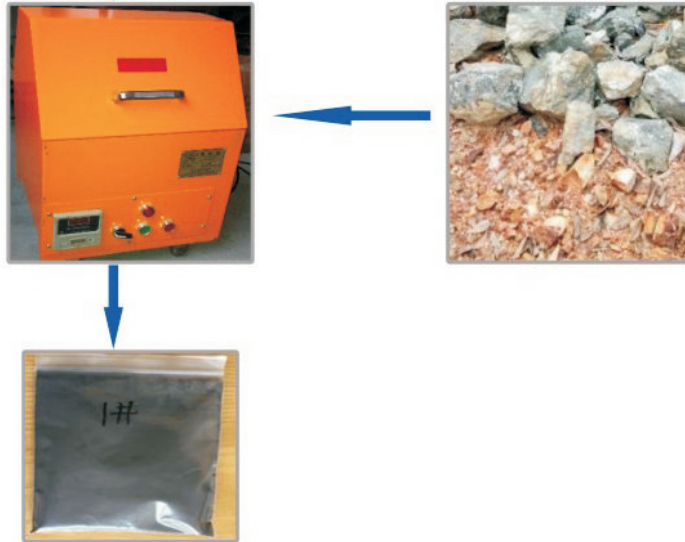
Optical-above configuration

X-ray tube

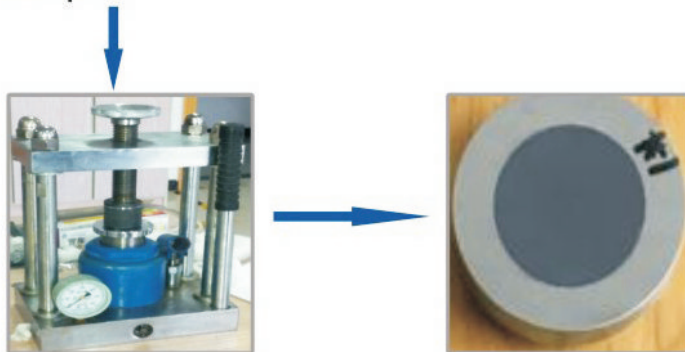


Analysis Flow Chart

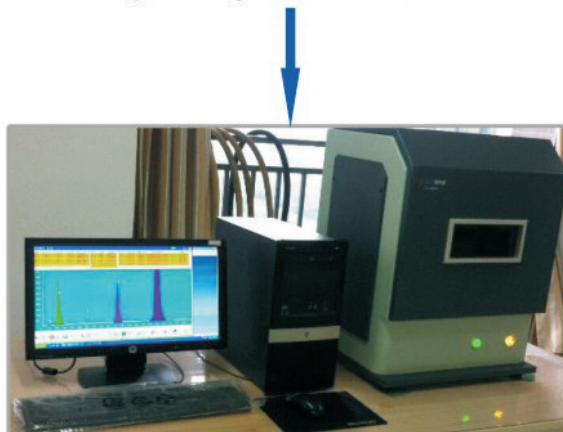
Step 1: Sample Preparation → Grind the solid samples into powder



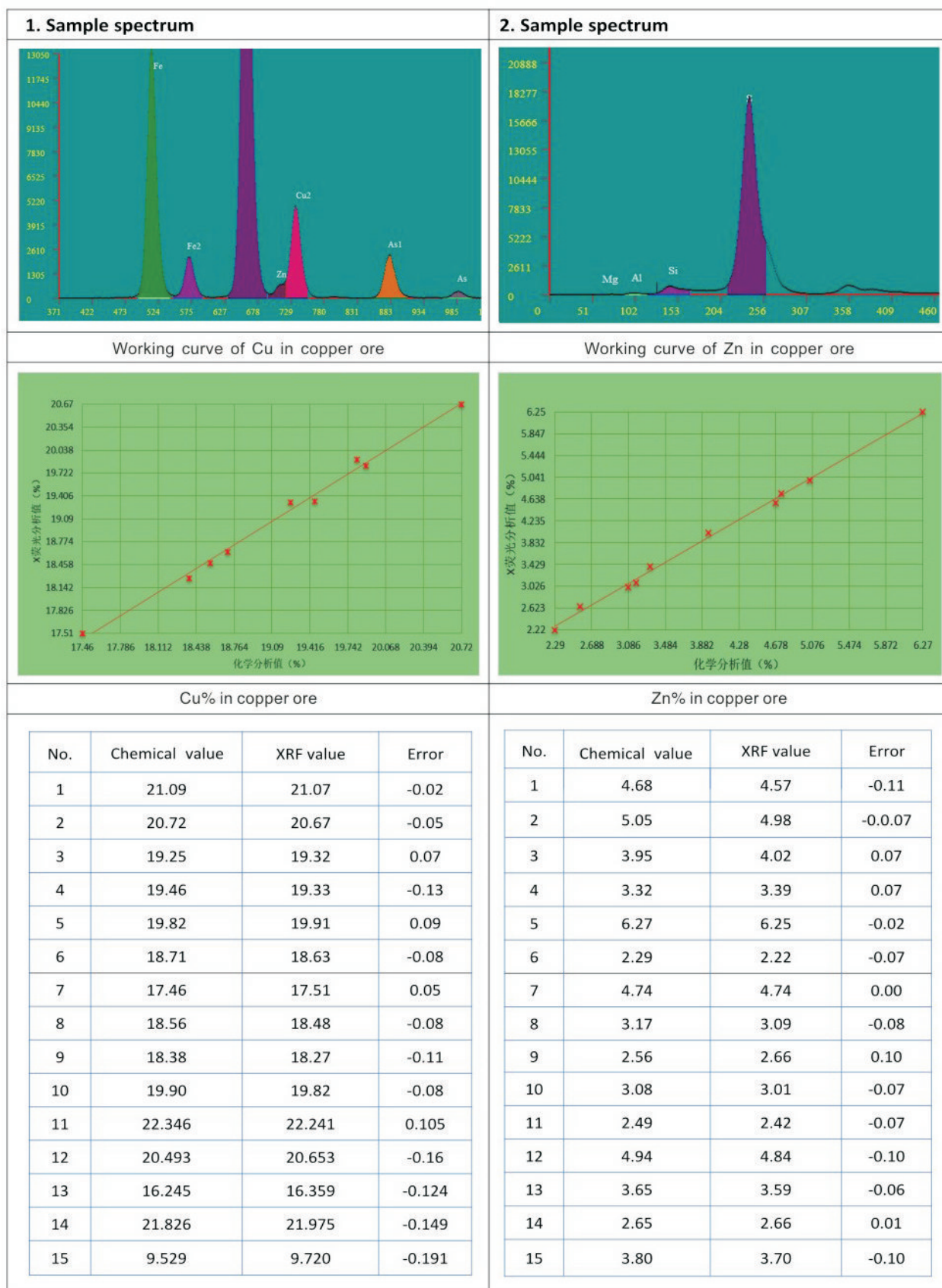
Step 2: Tablet the powder samples

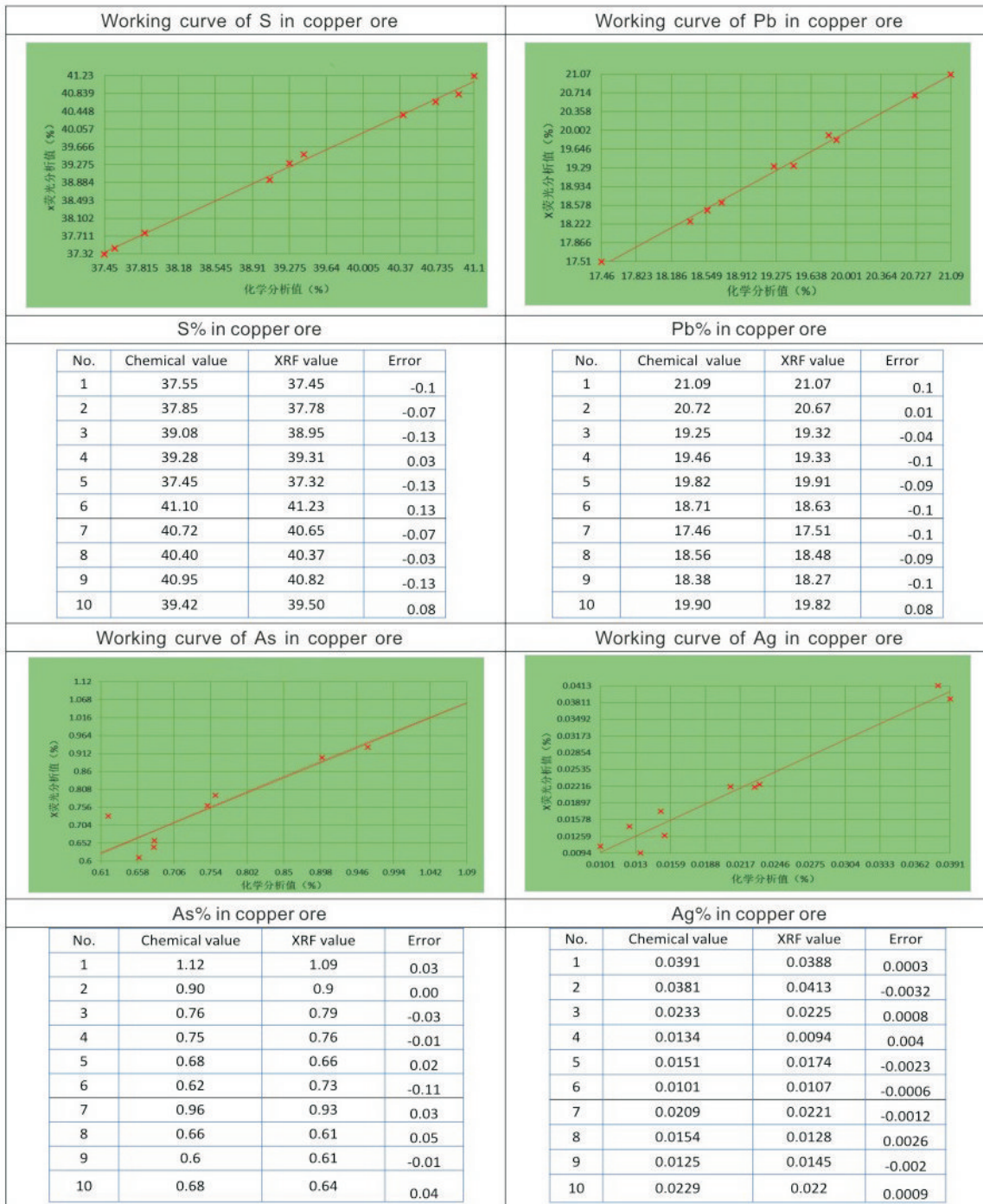


Step 3: Analysis the prepared samples by P9800 EDXRF



Analysis case of copper ore





WUXI JINYIBO INSTRUMENT TECHNOLOGY CO.,LTD.
WUXI JINYIBO DETECTION TECHNOLOGY CO.,LTD.

📍 Add.: No.35 Jingsheng Rd.,Huishan District,
Wuxi City 214151, Jiangsu Province, China
☎ Tel.: +86-510-8322 3658 +86-510-8321 7963
📱 Cell.: +86-183 5283 6805
📠 Fax.: +86-510-8322 3758
🌐 Web.: www.jinyibo.com
✉ E-mail: sales@jinyibo.com



Products to prevail in kind, the picture is for reference only. Copyright, ownership belongs to Jinyibo company, shall not be reproduced, copied, or used in other ways without permission.